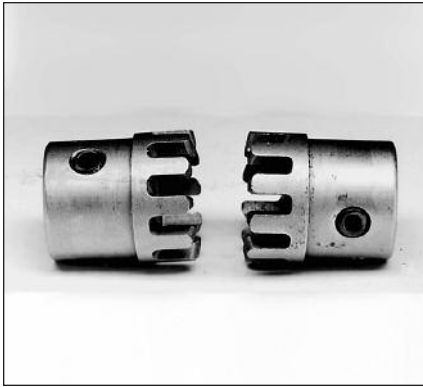


# SHAFT COUPLINGS

**MULTI-JAW TYPE**

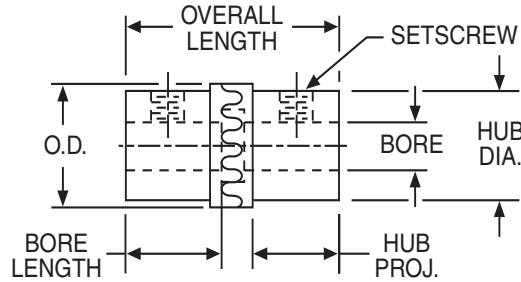
**FA SERIES**



**UNTREATED STEEL COUPLINGS** for use in light duty applications, require no lubrication.

**BORE SIZES FROM 3/16" TO 1/2"**

**COMPLETE WITH STANDARD SETSCREWS**



**STANDARD TOLERANCES**

DIMENSION		TOLERANCE
BORE	All	±.0005

**REFERENCE PAGES**

Alignment—148

Keyways and Setscrews—150

ALL DIMENSIONS IN INCHES  
ORDER BY CATALOG NUMBER OR ITEM CODE

Coupling Size	Bore	O.D.	Length†	Bore Length++	Assembly Clearance‡	Hub		Teeth	Steel	
						Dia.	Proj.		Catalog Number	Item Code
FA5	3/16	1/2	1-1/8	.48	.48	7/16	7/16	10	FA5 3/16-3/16	07900
	7/32								FA5 7/32-7/32	07902
	1/4								FA5 1/4-1/4	07904
FA75	5/16	3/4	1-1/2	5/8	1-3/4	11/16	33/64	10	FA75 5/16-5/16	07910
	3/8								FA75 3/8-3/8	07912
FA10	7/16	1	2	.86	.86	15/16	3/4	12	FA10 7/16-7/16	07908
	1/2								FA10 1/2-1/2	07906

†Total length of coupling with jaws engaged full depth.

++Length of hole in each half.

‡Approximate total length of coupling with jaws completely disengaged.

**RIGID (ONE PIECE) TYPE**

**CR SERIES**

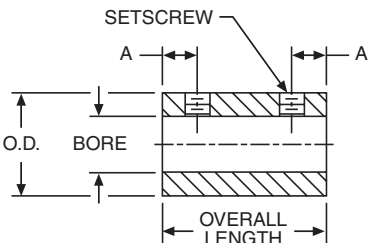


**BORE SIZES FROM 1/4" TO 1-1/4"**

**COMPLETE WITH STANDARD SETSCREWS**

ALL DIMENSIONS IN INCHES  
ORDER BY CATALOG NUMBER OR ITEM CODE

Bore	O.D.	Overall Length	A	Set screw	Catalog Number	Item Code
1/4	.48	3/4	3/16	#6-32	CR4	34200
5/16	.60	1	1/4	#10-32	CR5	34202
3/8	.72	1	1/4	#10-32	CR6	34204
1/2	.97	1-1/2	3/8	1/4-20	CR8	34206
5/8	1.21	2	1/2	1/4-20	CR10	34208
3/4	1.47	2	1/2	3/8-16	CR12	34210
7/8	1.72	2	1/2	3/8-16	CR14	34212
1	1.96	3	3/4	3/8-16	CR16	34214
1-1/4	2.21	4	1	1/2-13	CR20	34216



**REFERENCE PAGES**

Keyways and Setscrews—150

**STANDARD TOLERANCES**

DIMENSION		TOLERANCE
BORE	All	+ .001 - .000